

2024

PRODUCT CATALOG

**Where Simplicity
Meets Innovation**

TO PLACE AN ORDER, SIMPLY GET IN TOUCH WITH US
Phone: 1-562-972-8324 Email: order@newtonimplant.com

Phone: 1-562-972-8324 Email: order@newtonimplant.com
440 S. Melrose Dr #202 - Vista, CA 92081

TABLE OF CONTENT

■ Ni2 DRILL AND IMPLANT	4	■ DYNAMIC DIGITAL SOLUTIONS	23
■ SANDBLASTING & ETCHING	5	Surgical Guide	23
■ GUIDED KIT	6	Lab/Digital Analog	24
■ IMPLANTS	8	Digital Base	24
Implant Fixture	8	Digital Scan Bodies	25
■ ABUTMENTS	10	Premilled Abutment	25
Healing Abutment	10	Link Abutment	26
Gum Healing Abutment	11	■ KITS/INSTRUMENTS	27
■ PROSTHETICS	12	Ni2 Guide Kit & Parts	27-29
Solid Abutment	12-13	Newton Surgical Kit & Parts	30-31
Cemented Abutment	14-15	Ultimate Sinus Lift Kit & Parts	32-33
Angle Abutment	16-17	Fixture Remover Kit & Parts	34-35
Temporary Abutment	18	Bone Graft Kit	36
Impression Coping-Pick-Up	19	Gold Kit	36
Impression Coping-Transfer	20	Sutures	37
■ MULTI-UNIT	21		
Multi Unit Abutment	21		
Parts & Instruments	22		

Ni2 IMPLANT AND DRILL KIT

Features:

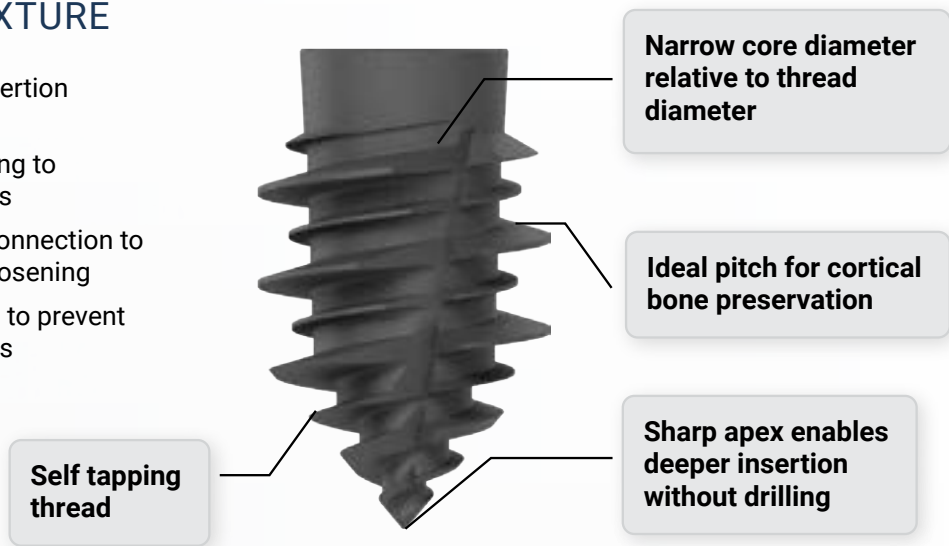
- 2 Drill Sequence
- SLA treatment
- Fresh new drill each box
- Dynamic digital solution

Each Implant box contains:

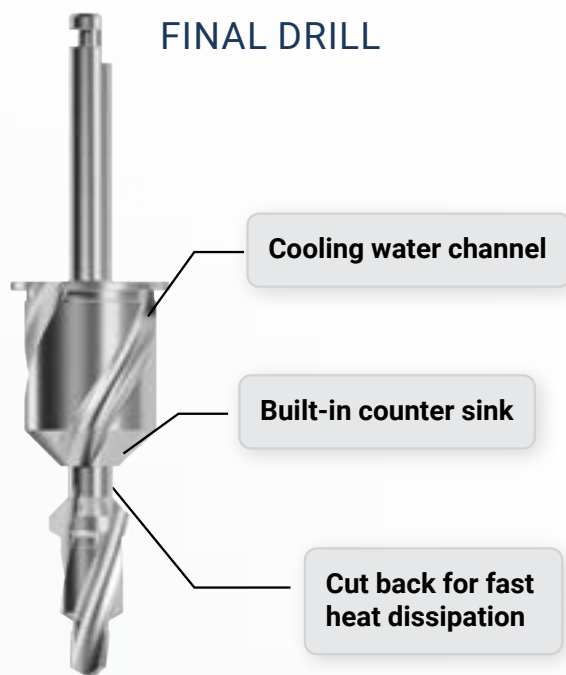
- 1 Cover screw
- 1 Implant fixture
- 1 Final drill

IMPLANT FIXTURE

- Cuts 1 line of insertion for the thread
- Platform switching to prevent bone loss
- Morse tapered connection to prevent screw loosening
- Smaller platform to prevent pressure necrosis



FINAL DRILL



COVER SCREWS

- Color-coded to facilitate identification.



Regular

Mini

HA SANDBLASTING & ETCHING

Sandblasting with Hydroxyapatite (HA) and acid etching to improve surface roughness as a surface treatment.

Achieving zero contamination is crucial for dental implants to ensure their long-term success and patient safety. Contaminants can lead to infections, inflammation, and implant failure by interfering with the osseointegration process. Sterile conditions during the manufacturing, handling and packaging of implants minimize the risk of bacterial colonization.

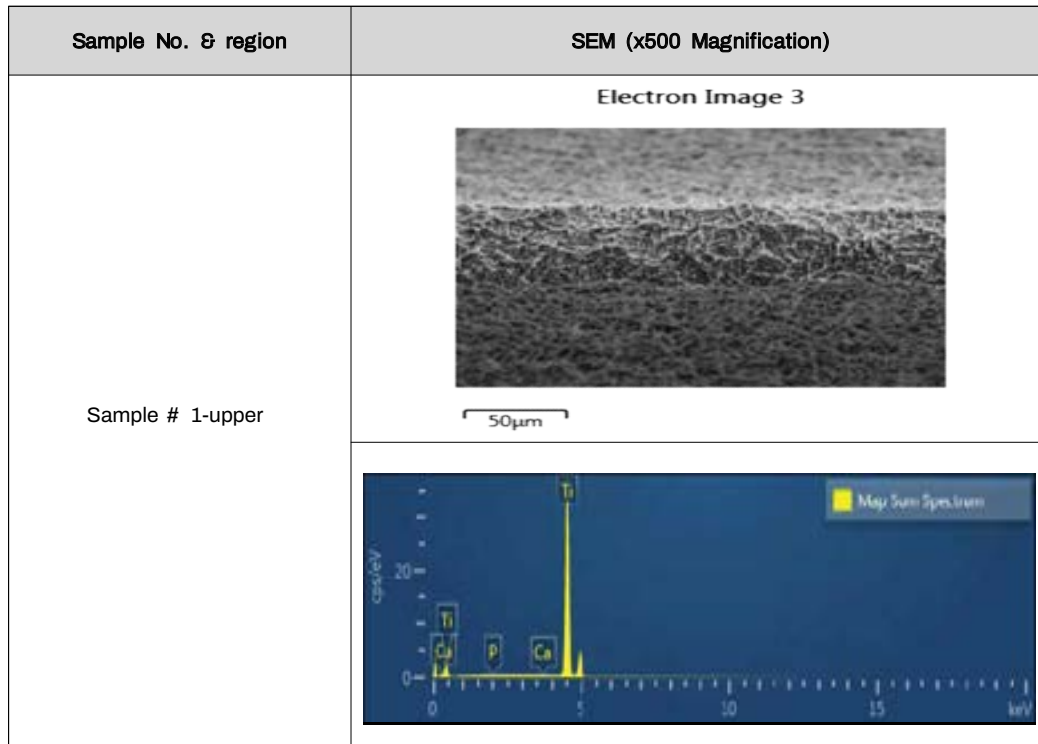
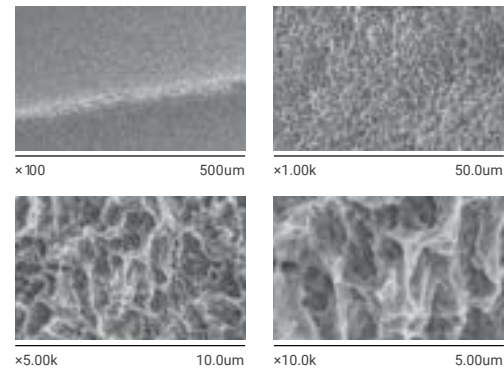
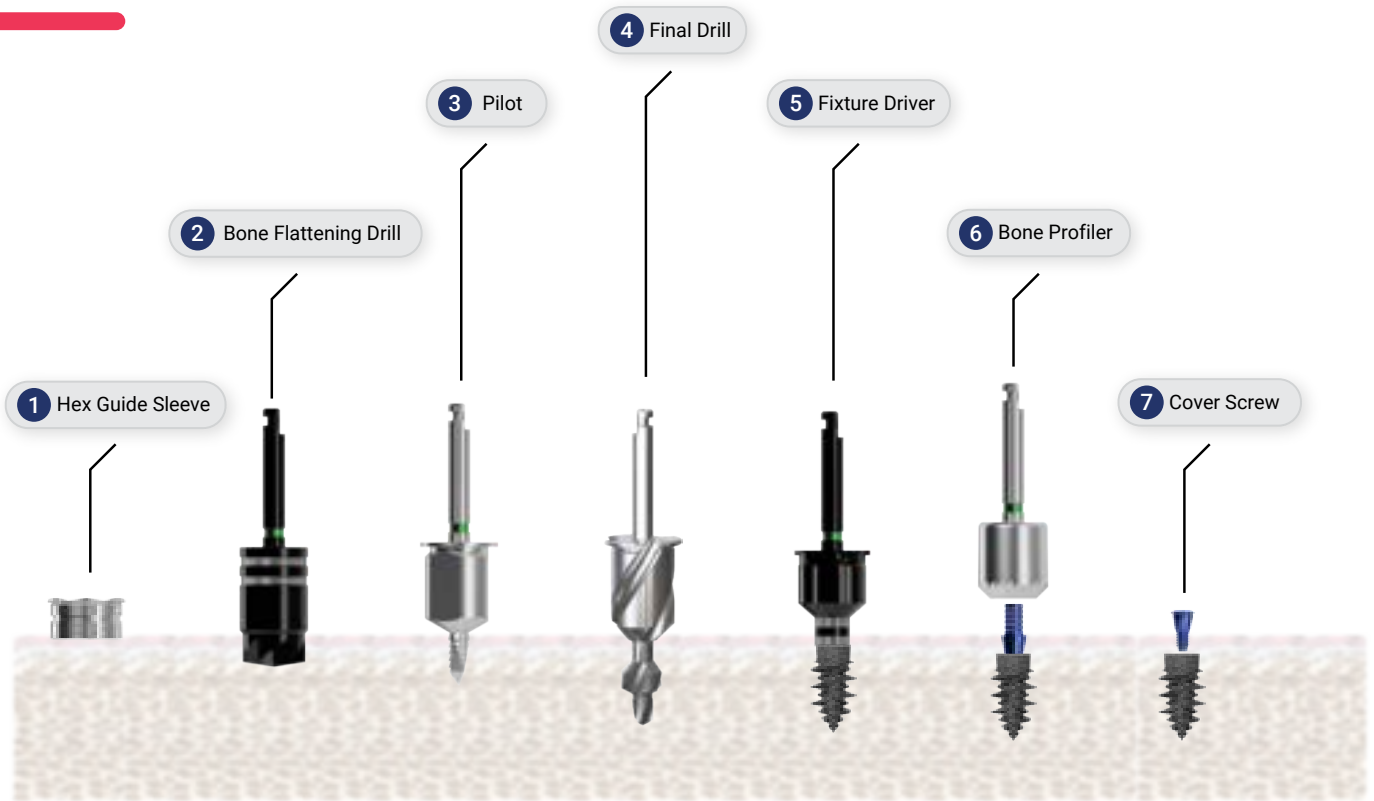


Fig. 1. Result of composition analysis (EDS) in sample # 1-upper.

Table 1. The result of composition analysis (EDS) in sample # 1-upper

Sample No. & region	Element	Weight (%)
Sample # 1-upper	Ti	100.00
	Ca	0.00
	P	0.00

GUIDED KIT



The sequence you've provided outlines the steps involved in a dental implant surgery using a guide kit. Here's the breakdown:

1. **Place Surgical Guide:** Accurately place the surgical guide over the edentulous area or the teeth to guide the implant placement process.
2. **Bone Flattening Drill:** If necessary, use a bone flattening drill to flatten the surface of the bone surface.
3. **Pilot Drill 2x5mm Depth:** Pilot drill to create the initial hole in the bone to a depth of 5mm and 2mm in diameter. This drill creates a pathway for the subsequent drills and helps establish the correct trajectory for the implant.
4. **Final Drill:** Proceed with the final drill, which is designed to enlarge the pilot hole to the appropriate diameter and depth for the implant.
5. **Fixture Delivery:** Insert the implant fixture into the osteotomy until it reaches the stopper.
6. **Bone Profiler:** Finally, screw in the bone profiler guide in the implant fixture and use a bone profiler to shape and contour the surrounding bone tissue to optimize the implant site's aesthetics and functionality.
7. **Cover screw:** Insert the provided cover screw onto the top of the implant to seal and protect the internal threads during the healing phase.



Manual Guided Fixture Driver

Utilize this fixture driver through the guide to place implant the fixture to a deeper position than initially planned.



Hand Piece Connector

The Hand piece connector serves as an intermediary device that allows for manual control with the torque wrench when the motor's capacity has been reached.



Torque Wrench

ORDERING & RE-ORDERING

TO PLACE AN ORDER, SIMPLY GET IN TOUCH WITH US OR SEND US THE REF NUMBER OF THE PRODUCT YOU ARE INTERESTED IN.

Call/Text: 1-562-972-8324

email: order@newtonimplant.com

website: www.newtonimplant.com

TO REORDER, SCAN THE QR CODE ON THE POUCH OR BOX TO BE DIRECTED TO THE WEBSITE.



IMPLANT FIXTURE

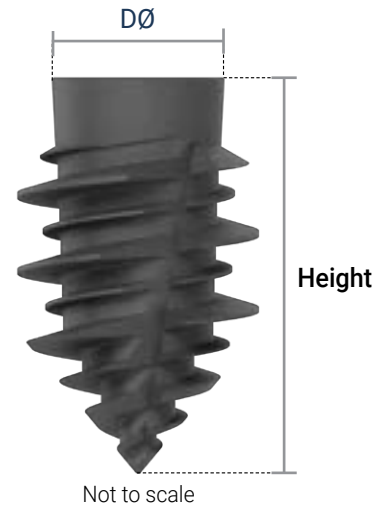
- Recommended implant placement torque: 40 Ncm or less
- Recommended implant placement speed: 15 rpm or less due to large Pitch size
- Tighten coverscrew by hand with 1.2 hex driver

Mini

- Ideal for narrow ridge

Wide

- Idea for posterior extraction and immediate implant placement



Screw Cover



MINI CONNECTION

	Ø3.0					
Length (mm)	8.5	10.0	11.5	13.0	15.0	
Ref	IF3008.M	IF3010.M	IF3011.M	IF3013.M	IF3015.M	
	Ø3.3					
Length (mm)	8.5	10.0	11.5	13.0	15.0	
Ref	IF3308.M	IF3310.M	IF3311.M	IF3313.M	IF3315.M	
	Ø3.6					
Length (mm)	7.0	8.5	10.0	11.5	13.0	15.0
Ref	IF3607.M	IF3608.M	IF3610.M	IF3611.M	IF3613.M	IF3615.M



Screw Cover



REGULAR CONNECTION

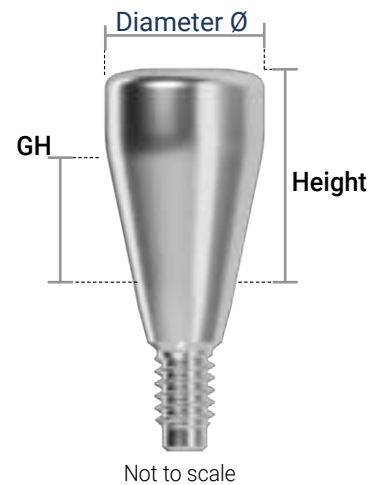
		Ø4.0						
Length (mm)		7.0	8.5	10.0	11.5	13.0	15.0	
Ref		IF4007.R	IF4008.R	IF4010.R	IF4011.R	IF4013.R	IF4015.R	
		Ø4.5						
Length (mm)		6.0	7.0	8.5	10.0	11.5	13.0	15.0
Ref		IF4506.R	IF4507.R	IF4508.R	IF4510.R	IF4511.R	IF4513.R	IF4515.R
		Ø5.0						
Length (mm)		6.0	7.0	8.5	10.0	11.5	13.0	15.0
Ref		IF5006.R	IF5007.R	IF5008.R	IF5010.R	IF5011.R	IF5013.R	IF5015.R
		Ø6.0						
Length (mm)		6.0	7.0	8.5	10.0	11.5	13.0	
Ref		IF6006.W	IF6007.W	IF6008.W	IF6010.W	IF6011.W	IF6013.W	
		Ø7.0						
Length (mm)		6.0	7.0	8.5	10.0	11.5		
Ref		IF7006.W	IF7007.W	IF7008.W	IF7010.W	IF7011.W		

HEALING ABUTMENTS

- Tighten with a 1.2 hex hand driver

M MINI CONNECTION

Diameter	REF	GH	HEIGHT
Ø4.0	HA401.M	1.0	3.0
	HA402.M	2.0	4.0
	HA403.M	3.0	5.0
	HA404.M	4.0	6.0
	HA405.M	5.0	7.0
D Ø4.5	HA451.M	1.0	3.0
	HA452.M	2.0	4.0
	HA453.M	3.0	5.0
	HA454.M	4.0	6.0
	HA455.M	5.0	7.0



R REGULAR CONNECTION

Diameter	REF	GH	HEIGHT
Ø4.0	HA401.R	1.0	3.0
	HA402.R	2.0	4.0
	HA403.R	3.0	5.0
	HA404.R	4.0	6.0
	HA405.R	5.0	7.0
Ø4.5	HA451.R	1.0	3.0
	HA452.R	2.0	4.0
	HA453.R	3.0	5.0
	HA454.R	4.0	6.0
	HA455.R	5.0	7.0
Ø5.0	HA501.R	1.0	3.0
	HA502.R	2.0	4.0
	HA503.R	3.0	5.0
	HA504.R	4.0	6.0
	HA505.R	5.0	7.0

Diameter	REF	GH	HEIGHT
Ø6.0	HA601.R	1.0	3.0
	HA602.R	2.0	4.0
	HA603.R	3.0	5.0
	HA604.R	4.0	6.0
	HA605.R	5.0	7.0
Ø7.0	HA701.R	1.0	3.0
	HA702.R	2.0	4.0
	HA703.R	3.0	5.0
	HA704.R	4.0	6.0
	HA705.R	5.0	7.0

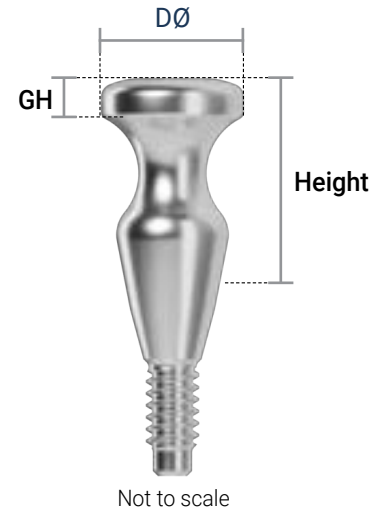
GUM HEALING ABUTMENTS

- Tighten by hand with 1.2 hex driver

M MINI CONNECTION

Ø4.0 MM DIAMETER

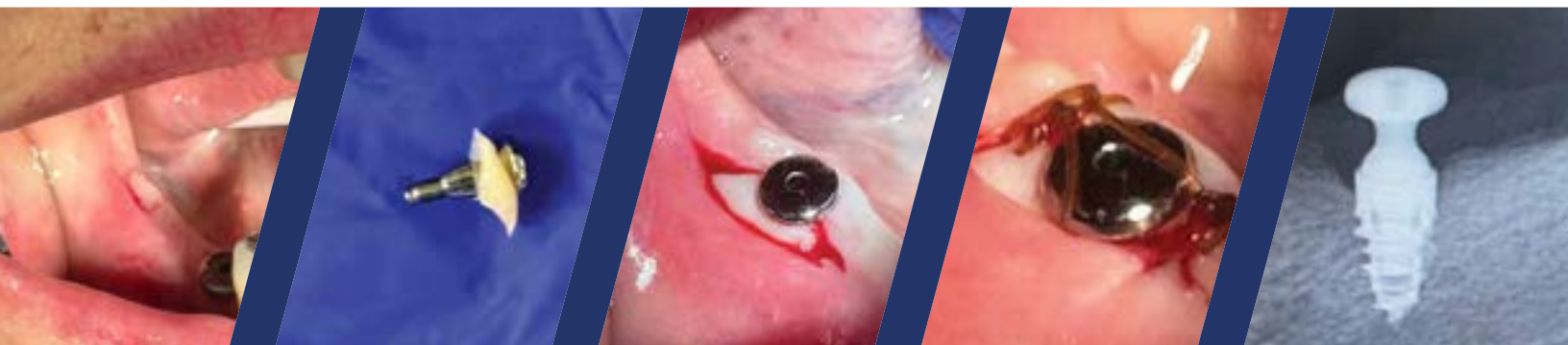
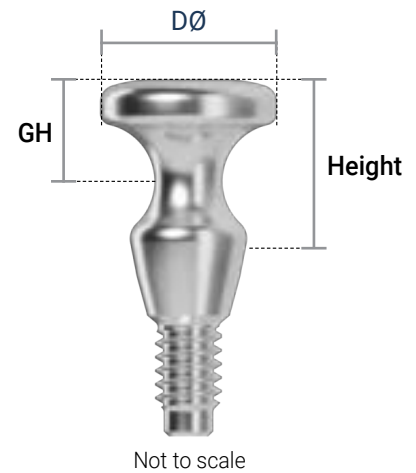
REF	GH (mm)	H (mm)
GHA404.M	1.0	6.0



R REGULAR CONNECTION

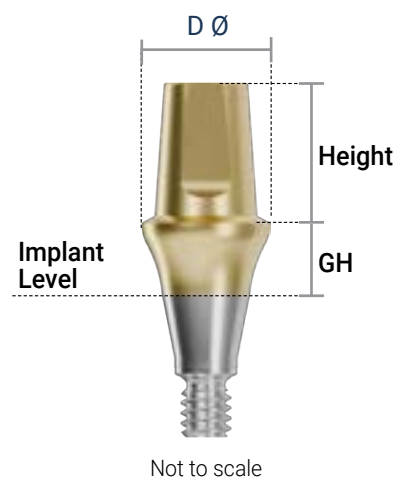
Ø5.0 MM DIAMETER

REF	GH (mm)	H (mm)
GHA503.R	3.0	5.0



SOLID ABUTMENT

- Recommended tightening torque: 20Ncm(mini), 30Ncm(regular)



M MINI CONNECTION

Diameter	H (mm)	1.0	2.0	3.0	4.0	5.0	GH
Ø4.0	5.5	SA4015.M	SA4025.M	SA4035.M	SA4045.M	SA4055.M	
	7.0	SA4017.M	SA4027.M	SA4037.M	SA4047.M	SA4057.M	
Ø4.5	5.5	SA4515.M	SA4525.M	SA4535.M	SA4545.M	SA4555.M	
	7.0	SA4517.M	SA4527.M	SA4537.M	SA4547.M	SA4557.M	

R REGULAR CONNECTION

Diameter	H (mm)	1.0	2.0	3.0	4.0	5.0	GH
Ø4.0	5.5	SA4015.R	SA4025.R	SA4035.R	SA4045.R	SA4055.R	
	7.0	SA4017.R	SA4027.R	SA4037.R	SA4047.R	SA4057.R	
Ø4.5	5.5	SA4515.R	SA4525.R	SA4535.R	SA4545.R	SA4555.R	
	7.0	SA4517.R	SA4527.R	SA4537.R	SA4547.R	SA4557.R	

SOLID ABUTMENT

R REGULAR CONNECTION CONTINUED

Diameter	H (mm)	1.0	2.0	3.0	4.0	5.0	GH
Ø5.0	4.0	SA5014.R	SA5024.R	SA5034.R	SA5044.R	SA5054.R	
	5.5	SA5015.R	SA5025.R	SA5035.R	SA5045.R	SA5055.R	
	7.0	SA5017.R	SA5027.R	SA5037.R	SA5047.R	SA5057.R	
Ø6.0	4.0	SA6014.R	SA6024.R	SA6034.R	SA6044.R	SA6054.R	
	5.5	SA6015.R	SA6025.R	SA6035.R	SA6045.R	SA6055.R	
	7.0	SA6017.R	SA6027.R	SA6037.R	SA6047.R	SA6057.R	
Ø7.0	5.5	SA7015.R	SA7025.R	SA7035.R	SA7045.R	SA7057.R	

CEMENTED ABUTMENT

- Recommended tightening torque: 20Ncm(mini), 30Ncm(regular)



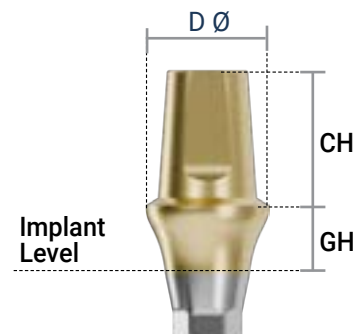
HEX - MINI



NON-HEX - MINI



1 Screw
Included



Not to scale

M MINI CONNECTION

Diameter	Type	CH (mm)	1.0	2.0	3.0	4.0	5.0	GH
Ø4.0	HEX	5.5	CA4015H.M	CA4025H.M	CA4035H.M	CA4045H.M	CA4055H.M	
		7.0	CA4017H.M	CA4027H.M	CA4037H.M	CA4047H.M	CA4057H.M	
	NON-HEX	5.5	CA4015NH.M	CA4025NH.M	CA4035NH.M	CA4045NH.M	CA4055NH.M	
		7.0	CA4017NH.M	CA4027NH.M	CA4037NH.M	CA4047NH.M	CA4057NH.M	
Ø4.5	HEX	5.5	CA4515H.M	CA4525H.M	CA4535H.M	CA4545H.M	CA4555H.M	
		7.0	CA4517H.M	CA4527H.M	CA4537H.M	CA4547H.M	CA4557H.M	
	NON-HEX	5.5	CA4515NH.M	CA4525NH.M	CA4535NH.M	CA4545NH.M	CA4555NH.M	
		7.0	CA4517NH.M	CA4527NH.M	CA4537NH.M	CA4547NH.M	CA4557NH.M	

CEMENTED ABUTMENT



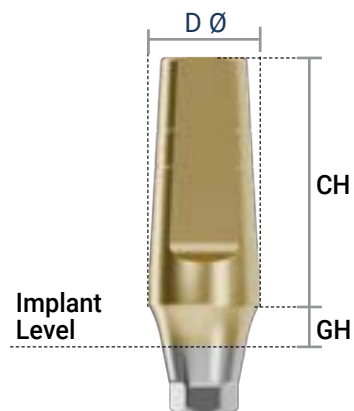
HEX - REGULAR



NON-HEX - REGULAR



1 Screw
Included



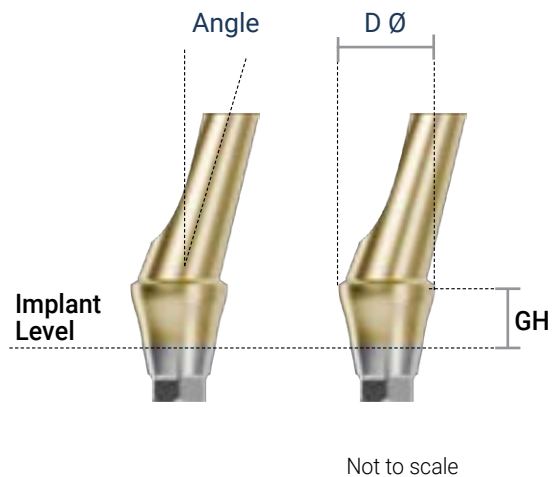
Not to scale

R REGULAR CONNECTION

Diameter	Type	CH (mm)	1.0	2.0	3.0	4.0	5.0	GH
Ø4.5	HEX	5.5	CA4515H.R	CA4525H.R	CA4535H.R	CA4545H.R	CA4555H.R	
		7.0	CA4517H.R	CA4527H.R	CA4537H.R	CA4547H.R	CA4557H.R	
Ø4.5	NON-HEX	5.5	CA4515NH.R	CA4525NH.R	CA4535NH.R	CA4545NH.R	CA4555NH.R	
		7.0	CA4517NH.R	CA4527NH.R	CA4537NH.R	CA4547NH.R	CA4557NH.R	
Ø5.0	HEX	5.5	CA5015H.R	CA5025H.R	CA5035H.R	CA5045H.R	CA5055H.R	
		7.0	CA5017H.R	CA5027H.R	CA5037H.R	CA5047H.R	CA5057H.R	
Ø5.0	NON-HEX	5.5	CA5015NH.R	CA5025NH.R	CA5035NH.R	CA5045NH.R	CA5055NH.R	
		7.0	CA5017NH.R	CA5027NH.R	CA5037NH.R	CA5047NH.R	CA5057NH.R	
Ø6.0	HEX	5.5	CA6015H.R	CA6025H.R	CA6035H.R	CA6045H.R	CA6055H.R	
		7.0	CA6017H.R	CA6027H.R	CA6037H.R	CA6047H.R	CA6057H.R	
	NON-HEX	5.5	CA6015NH.R	CA6025NH.R	CA6035NH.R	CA6045NH.R	CA6055NH.R	
		7.0	CA6017NH.R	CA6027NH.R	CA6037NH.R	CA6047NH.R	CA6057NH.R	
Ø7.0	HEX	5.5	CA7015H.R	CA7025H.R	CA7035H.R	CA7045H.R	CA7055H.R	
	NON-HEX	5.5	CA7015NH.R	CA7025NH.R	CA7035NH.R	CA7045NH.R	CA7055NH.R	

ANGLE ABUTMENT

- Recommended tightening torque:
20Ncm(mini), 30Ncm(regular)



M MINI CONNECTION

Diameter	Type	Angle	1.0	2.0	3.0	4.0	GH
Ø4.0	HEX	17°	AA17401H.M	AA17402H.M	AA17403H.M	AA17404H.M	
		25°	AA25401H.M	AA25402H.M	AA25403H.M	AA25404H.M	
	NON-HEX	17°	AA17401NH.M	AA17402NH.M	AA17403NH.M	AA17404NH.M	
		25°	AA25401NH.M	AA25402NH.M	AA25403NH.M	AA25404NH.M	
Ø4.5	HEX	17°	AA17451H.M	AA17452H.M	AA17453H.M	AA17454H.M	
		25°	AA25451H.M	AA25452H.M	AA25453H.M	AA25454H.M	
	NON-HEX	17°	AA17451NH.M	AA17452NH.M	AA17453NH.M	AA17454NH.M	
		25°	AA25451NH.M	AA25452NH.M	AA25453NH.M	AA25454NH.M	

ANGLE ABUTMENT



REGULAR CONNECTION

Diameter	Type	Angle	1.0	2.0	3.0	4.0	GH
Ø4.5	HEX	17°	AA17451H.R	AA17452H.R	AA17453H.R	AA17454H.R	
		25°	AA25451H.R	AA25452H.R	AA25453H.R	AA25454H.R	
	NON-HEX	17°	AA17451NH.R	AA17452NH.R	AA17453NH.R	AA17454NH.R	
		25°	AA25451NH.R	AA25452NH.R	AA25453NH.R	AA25454NH.R	
Ø5.0	HEX	17°	AA17501H.R	AA17502H.R	AA17503H.R	AA17504H.R	
		25°	AA25501H.R	AA25502H.R	AA25503H.R	AA25504H.R	
	NON-HEX	17°	AA17501NH.R	AA17502NH.R	AA17503NH.R	AA17504NH.R	
		25°	AA25501NH.R	AA25502NH.R	AA25503NH.R	AA25504NH.R	
Ø6.0	HEX	17°	AA17601H.R	AA17602H.R	AA17603H.R	AA17604H.R	
		25°	AA25601H.R	AA25602H.R	AA25603H.R	AA25604H.R	
	NON-HEX	17°	AA17601NH.R	AA17602NH.R	AA17603NH.R	AA17604NH.R	
		25°	AA25601NH.R	AA25602NH.R	AA25603NH.R	AA25604NH.R	

TEMPORARY ABUTMENT

- Recommended tightening torque: 20Ncm(mini), 30Ncm(regular)



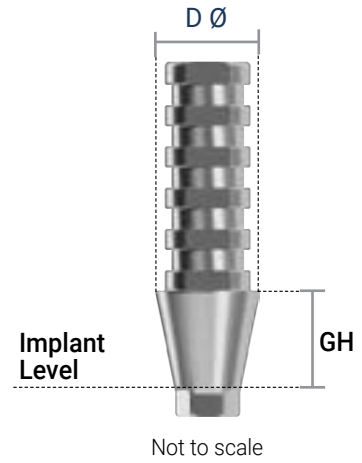
HEX



NON-HEX



1 Screw
Included



M MINI CONNECTION

Diameter	Type	1.0	3.0	GH
Ø4.0	Hex	TA401H.M	TA403H.M	
	Non Hex	TA401NH.M	TA403NH.M	

R REGULAR CONNECTION

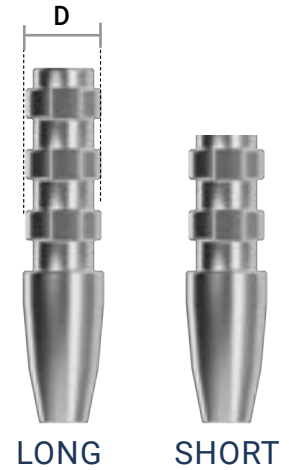
Diameter	Type	1.0	3.0	GH
Ø4.5	Hex	TA451H.R	TA453H.R	
	Non Hex	TA451NH.R	TA453NH.R	

IMPRESSION COPING-PICK-UP

- Tighten with a 1.2 hex hand driver



Not to scale



M MINI CONNECTION

R REGULAR CONNECTION

Type	Short	Long	H
	Ø4.0		D
HEX	ICOT40SH.M	ICOT40LH.M	
NON-HEX	ICOT40SNH.M	ICOT40LNH.M	
	Ø4.5		D
HEX	ICOT45SH.M	ICOT45LH.M	
NON-HEX	ICOT45SNH.M	ICOT45LNH.M	

Type	Short	Long	H
	Ø4.0		D
HEX	ICOT40SH.M	ICOT40LH.M	
NON-HEX	ICOT40SNH.M	ICOT40LNH.M	
	Ø4.5		D
HEX	ICOT45SH.R	ICOT45LH.M	
NON-HEX	ICOT45LH.R	ICOT45LNH.M	
	Ø5.0		D
HEX	ICOT50SH.R	ICOT50SNH.R	
NON-HEX	ICOT50LH.R	ICOT50LNH.R	
	Ø6.0		D
HEX	ICOT60SH.R	ICOT60SNH.R	
NON-HEX	ICOT60LH.R	ICOT60LNH.R	
	Ø7.0		D
HEX	ICOT70SH.R	ICOT70SNH.R	
NON-HEX	ICOT70LH.R	ICOT70LNH.R	

IMPRESSION COPING-TTRANSFER

- Tighten with a 1.2 hex hand driver



HEX



NON-HEX



Short and Long
Screw Included

Not to scale



LONG



SHORT

M MINI CONNECTION

Type	Short	Long	H
	Ø4.0		D
HEX	ICCT40SH.M	ICCT40LH.M	
NON-HEX	ICCT40SNH.M	ICCT40LNH.M	
	Ø4.5		D
HEX	ICCT45SH.M	ICCT45LH.M	
NON-HEX	ICCT45SNH.M	ICCT45LNH.M	

R REGULAR CONNECTION

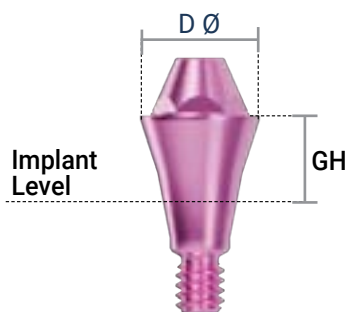
Type	Short	Long	H
	Ø4.0		D
HEX	ICCT40SH.R	ICCT40LH.R	
NON-HEX	ICCT40SNH.R	ICCT40LNH.R	
	Ø4.5		D
HEX	ICCT45SH.R	ICCT45LH.R	
NON-HEX	ICCT45SNH.R	ICCT45LNH.R	
	Ø5.0		D
HEX	ICCT50SH.R	ICCT50LH.R	
NON-HEX	ICCT50SNH.R	ICCT50LNH.R	
	Ø6.0		D
HEX	ICCT60SH.R	ICCT60LH.R	
NON-HEX	ICCT60SNH.R	ICCT60LNH.R	
	Ø7.0		D
HEX	ICCT70SH.R	ICCT70LH.R	
NON-HEX	ICCT70SNH.R	ICCT70LNH.R	

MULTI UNIT ABUTMENT

• Recommended tightening torque: 20Ncm(mini), 30Ncm(regular)

pink = Mini connection

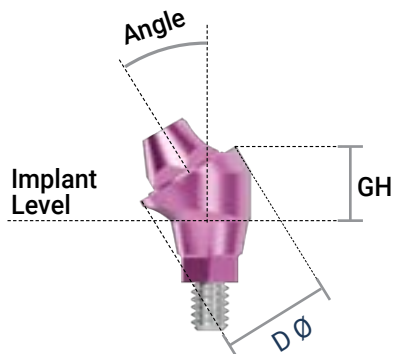
gold = Regular connection



Not to scale

**MISSING
IMAGE**

*Holder
Included*



Not to scale



*Holder
Included*

M STRAIGHT MINI CONNECTION

Ø4.8MM DIAMETER

REF	GH
SMU4815.M	1.5
SMU4825.M	2.5
SMU4835.M	3.5
SMU4845.M	4.5



M ANGLED MINI CONNECTION

Ø4.8MM DIAMETER

REF	ANGLE	GH
AMU174825.M		2.5
AMU174835.M	17°	3.5
AMU174845.M		4.5
<hr/>		
AMU304835.M	30°	3.5
AMU304845.M		4.5



R STRAIGHT REGULAR CONNECTION

Ø4.8MM DIAMETER

REF	GH
SMU4815.R	1.5
SMU4825.R	2.5
SMU4835.R	3.5
SMU4845.R	4.5



R ANGLED REGULAR CONNECTION

Ø4.8MM DIAMETER

REF	ANGLE	GH
AMU174825.R		2.5
AMU174835.R	17°	3.5
AMU174845.R		4.5
<hr/>		
AMU304835.R	30°	3.5
AMU304845.R		4.5



PARTS & INSTRUMENTS

TEMPORARY MULTI UNIT ABUTMENT

REF

TMU



Available in 5 pack

MULTI UNIT IMPRESSION COPING-PICK UP

REF

DIAMETER
(mm)

ICMUOT

4.8



Available in 5 pack

HEALING ABUTMENT MULTIUNIT

REF

DIAMETER
(mm)

HAM

4.8



Tighten by hand with
1.2 hex driver

MULTI UNIT IMPRESSION COPING -TRANSFER

REF

DIAMETER
(mm)

ICMUOT

4.8



Available in 5 pack

MULTI UNIT SCREW (AVAILABLE IN 5 PACK)

REF

MUS16



Recommended tightening
torque: 20Ncm(mini/regular)

STRAIGHT MULTI UNIT ABUTMENT RATCHET DRIVER

REF

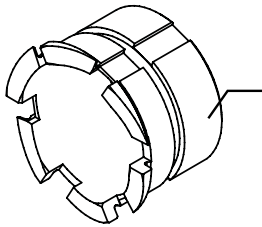
SMURD



Recommended tightening
torque: 20Ncm(mini),
30Ncm(regular)

SURGICAL GUIDE

Through Dynamic Digital Solution, the Hex Guide Sleeve enables same-day restoration for the patient.



Hex Guided Sleeve

Position your hex face to an ideal restoration.



Together with the Hex guided sleeve, the driver will stop at the planned implant's hex position.

Guided fixture driver has marking representing the hexagonal face of the implant fixture.

MINI IMPLANT FIXTURES Ø3.0, Ø3.3, AND Ø3.6

HEX GUIDE SLEEVE

REF
HG.M



GUIDED FIXTURE DRIVER MANUAL

REF
GFDM.M



GUIDED BONE FLATTENING DRILL

REF
GBFD.M



REGULAR IMPLANT FIXTURES Ø4.0, Ø4.5, AND Ø5.0

HEX GUIDE SLEEVE

REF
HG.R



GUIDED FIXTURE DRIVER MANUAL

REF
GFDM.R



GUIDED BONE FLATTENING DRILL

REF
GBFD.R



WIDE IMPLANT FIXTURES Ø6.0 AND Ø7.0

HEX GUIDE SLEEVE

REF
HG.W



GUIDED FIXTURE DRIVER MANUAL

REF
GFDM.W



GUIDED BONE FLATTENING DRILL

REF
GBFD.W



LAB/DIGITAL ANALOG

SCANNABLE
LAB ANALOG/
DIGITAL MINI

REF
SDA.M



SCANNABLE LAB
ANALOG/ DIGITAL
REGULAR

REF
SDA.R



SCANNABLE LAB
ANALOG/ DIGITAL
MULTIUNIT

REF
SDAMU



DIGITAL BASE



NON HEX
4.0 CH



NON HEX
5.5 CH



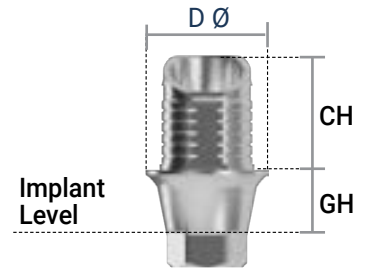
HEX
4.0 CH



HEX
5.5 CH



1 Screw
Included



Not to scale

M MINI CONNECTION

Type	4.0	5.5	CH
	Ø3.8		D
	0.9		GH
HEX	DB40H.M	DB55H.M	
NON-HEX	DB40NH.M	DB55NH.M	

R REGULAR CONNECTION

Type	4.0	5.5	CH
	4.3		D
	0.9		GH
HEX	DB40H.R	DB55H.R	
NON-HEX	DB40NH.R	DB55NH.R	

DIGITAL SCAN BODIES

SCAN BODY
COPING MINI

REF

SBC.M



SCAN BODY
COPING
REGULAR

REF

SBC.R



SCAN BODY
COPING MULTI-
UNIT

REF

SBC.MU



PREMILLED ABUTMENT



Ø10.0



Ø14.0



2 Screws
Included

M MINI CONNECTION

	Ø10.0	Ø14.0	D
Hex	SPA10H.M	SPA14H.M	
Non Hex	SPA10N.M	SPA14N.M	

R REGULAR CONNECTION

	Ø10.0	Ø14.0	D
Hex	SPA10H.R	SPA14H.R	
Non Hex	SPA10N.R	SPA14N.R	

LINK ABUTMENT



1.0 GH
MINI
NON HEX



3.0 GH
MINI
NON HEX



1 Screw
Included



1.0 GH
REGULAR
HEX



3.0 GH
REGULAR
HEX

M MINI CONNECTION

Ø	Type	1.0	3.0	GH
	4.5	Hex	ILKAC451HM	ILKAC453HM
Non Hex		ILKAC451NM	ILKAC453NM	

R REGULAR CONNECTION

Ø	Type	1.0	3.0	GH
	4.5	Hex	ILKAC451HR	ILKAC453HR
Non Hex		ILKAC451NR	ILKAC453NR	

LINK ABUTMENT SCAN BODY

REF
ILCRDBTI

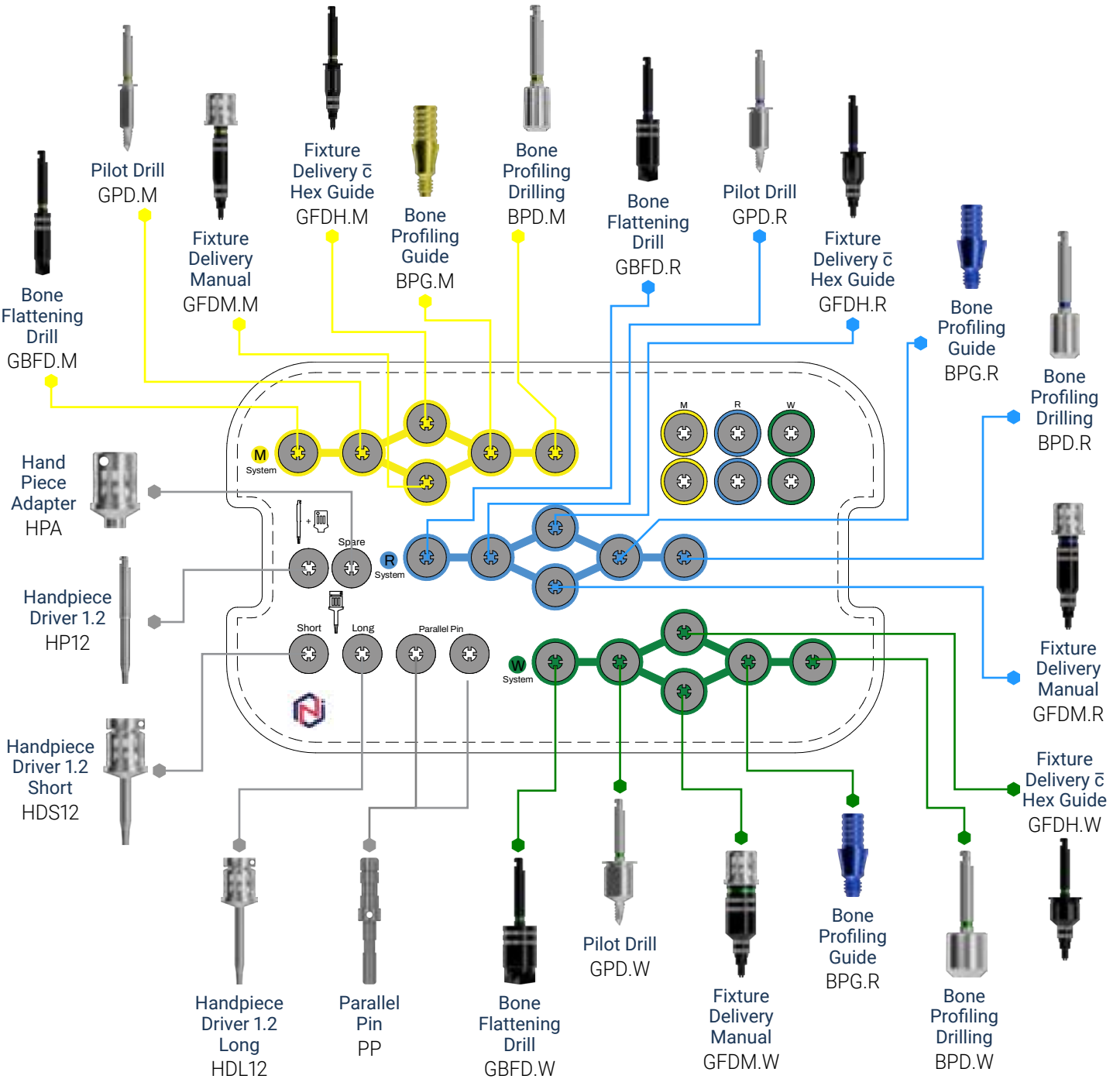


Ni2 GUIDE KIT

REF

Ni2GuiKit

Newton Guide kit stands as the ultimate guided surgery, embodying precision and innovation. Combined with the Hex Sleeve, the ideal prosthetic hex position can be achieved.



Ni2 GUIDE KIT PARTS

BONE FLATTENING DRILL

REF	Connection
GBFD.M	Mini
GBFD.R	Regular
GBFD.W	Wide



- The advanced design ensures stable bone removal without any bounce back
- Each line marking represents 1mm

FIXTURE DELIVERY MANUAL

REF	Connection
GFD.M	Mini
GFD.R	Regular
GFD.W	Wide



- Manually place the implant at the desired depth through the Hex Guide
- Each line marking represents 1mm

PILOT DRILL

REF	Connection
GPD.M	Mini
GPD.R	Regular
GPD.W	Wide



- Prepare the initial osteotomy with a 2mm drill for the subsequent drilling procedure

BONE PROFILING GUIDE

REF	Connection
BPG.M	Mini
BPG.R	Regular
BPG.W	Wide



- The Bone Profiling Guide protects the implant's platform from damage

FIXTURE DELIVERY C̄ HEX GUIDE

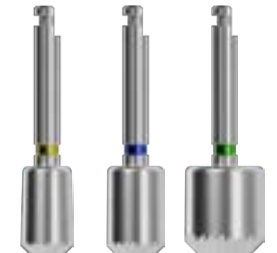
REF	Connection
GFDH.M	Mini
GFDH.R	Regular
GFDH.W	Wide



- Use the hand piece to place the implant through the Hex Guide
- The Hex Guide will secure the fixture driver once the planned position and depth are achieved
- Each line marking represents 1mm

BONE PROFILING DRILLING

REF	Connection
BPD.M	Mini
BPD.R	Regular
BPD.W	Wide



- Utilize it for removing bone around the implant following first or second stage surgery
- Connect it the Bone Profiling Guide

Ni2 GUIDE KIT PARTS

HAND PIECE ADAPTER

REF

HPA

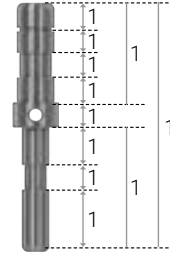


- Place it on the shank of a handpiece-compatible accessory for manual turning or use it with a torque wrench.

PARALLEL PIN

REF

PP



- This is used to confirm the path and depth of the implant after drilling.

HANDPIECE DRIVER 1.2

REF

Height

HP12

HDS12

Short

HDL12

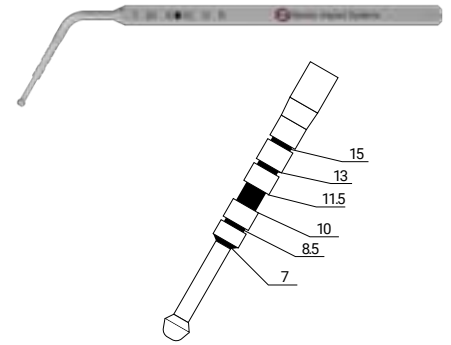
Long



DEPTH GAUGE

REF

DG



TORQUE WRENCH

REF

TW



- Torque wrench is marked at 15, 35, 55, and 70 Ncm

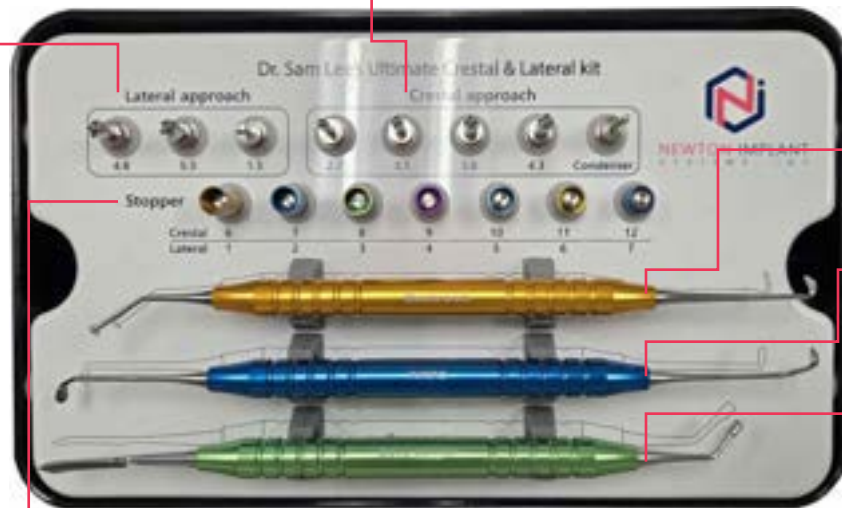
ULTIMATE SINUS LIFT KIT

REF
ULK

This kit will prepare you to be ready for any situation when a Sinus Lift is necessary for implant placement, by combining both Lateral and Crestal approaches in just one kit. The special drills created by Dr. Samuel Lee have internal irrigation, which create a hydraulic shield, preventing the burr from cutting the Schneiderian membrane. Along with stoppers to provide a safe incremental osteotomy, there are two other tools to easily detach the sinus membrane, and another to carry and pack bone for the Sinus Lift. This kit enables you to view the sinus membrane, making simple a procedure which was once considered a blind technique.



Lateral Approach Drills



Mushroom Instrument
ULK.M

Cobra Instrument
ULK.C

Bonegraft Instrument
ULK.B

Stoppers



Crestal 6 &
Lateral 1
ULK.S6



Crestal 7 &
Lateral 2
ULK.S7



Crestal 8 &
Lateral 3
ULK.S8



Crestal 9 &
Lateral 4
ULK.S9



Crestal 10 &
Lateral 5
ULK.S10



Crestal 11 &
Lateral 6
ULK.S11



Crestal 12 &
Lateral 7
ULK.S12

ULTIMATE SINUS LIFT KIT PARTS

LATERAL APPROACH DRILLS

REF	Connection
ULK.L48	4.8mm
ULK.L53	5.3mm
ULK.15	Side Cutting Drill



CRESTAL APPROACH DRILLS

REF	Connection
ULK.C28	2.8mm
ULK.C31	3.1mm
ULK.C38	3.8mm
ULK.C43	4.3mm
ULK.CON	Bone Condensing Drill



STOPPERS

REF	Connection
ULK.S6	Crestal 6 & Lateral 1
ULK.S7	Crestal 7 & Lateral 2
ULK.S8	Crestal 8 & Lateral 3
ULK.S9	Crestal 9 & Lateral 4
ULK.S10	Crestal 10 & Lateral 5
ULK.S11	Crestal 11 & Lateral 6
ULK.S12	Crestal 12 & Lateral 7



MUSHROOM INSTRUMENT

REF
ULK.M

- "Mushroom" instrument is to check the osteotomy on lateral window.

COBRA INSTRUMENT

REF
ULK.C

- "Cobra" instrument is to further detach the membrane on lateral window.

BONEGRAFT INSTRUMENT

REF
ULK.B

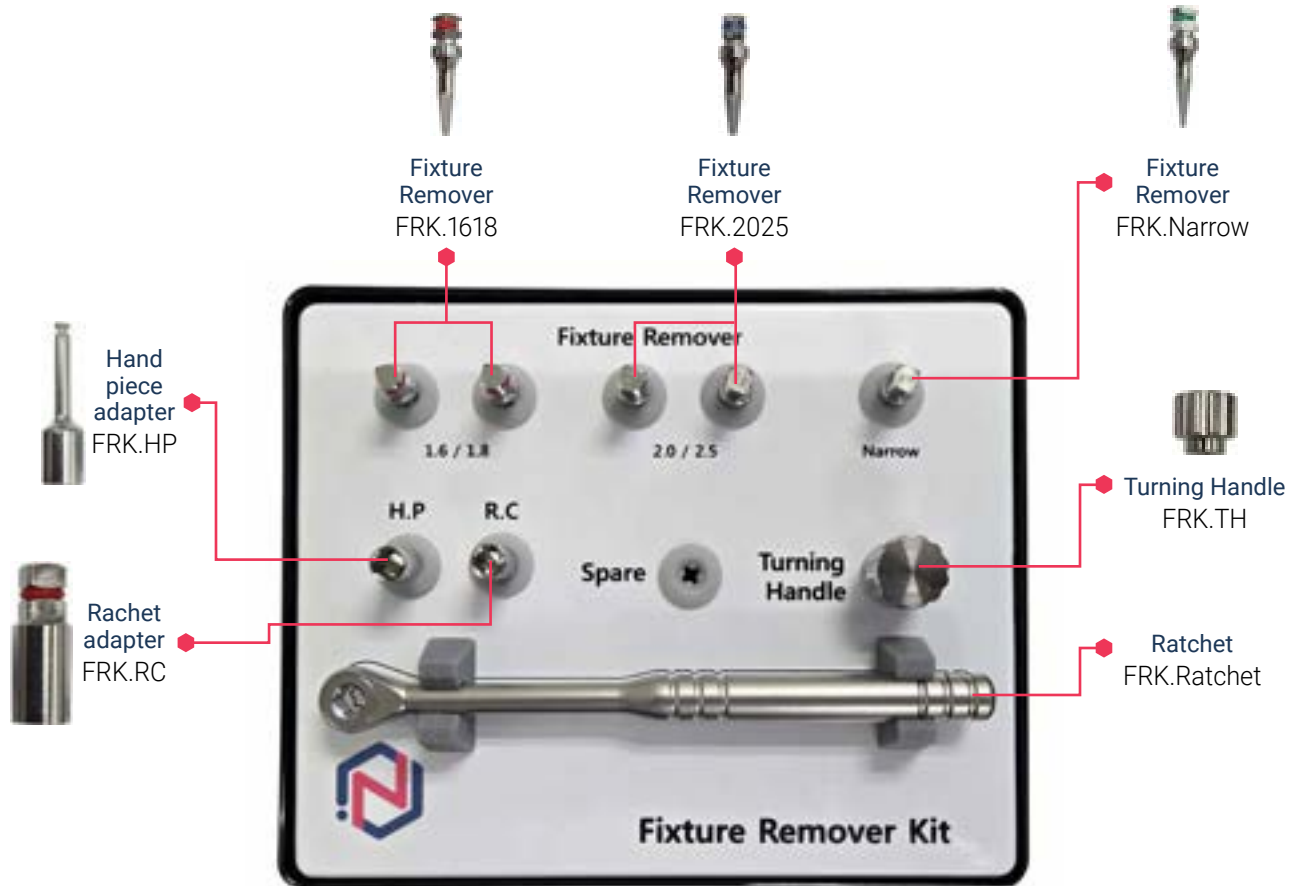
- Instrument to handle bonegraft material.

FIXTURE REMOVER KIT

REF

FRK

Remove any osseo-integrated dental implant with this simple kit! Typically, it takes about 300-400 Ncm to remove one osseo-integrated dental implant. Conventional implant mounts will flower or distort the fixture when applying over 200 Ncm. In contrast, the use of piezo or trephine will damage surrounding bone when removing the unwanted dental fixture. This kit is designed to bind the fixture by making new internal threads within the dental implant, thus reverse-torquing any dental implant in a minimally invasive way without use of trephine/piezo.



FIXTURE REMOVER KIT PARTS

FIXTURE REMOVER

REF

FRK.1618

- This drill is ideal for engaging with screw diameters of 1.6 to 1.8 mm.



FIXTURE REMOVER

REF

FRK.2025

- This drill is ideal for engaging with screw diameters of 2.0 to 2.5 mm.



FIXTURE REMOVER

REF

FRK.Narrow

- This drill is ideal for engaging with screw diameter arrower than 1.6mm.



HAND PIECE ADAPTER

REF

FRK.HP



RACHET ADAPTER

REF

FRK.RC



TURNING HANDLE

REF

FRK.TH

- Adapter to turn the drill manually.



RATCHET

REF

FRK.Ratchet

BONE GRAFT KIT

The MIT Cortical Bone offers an osteo-conductive scaffold for promoting bone regeneration, and provides effective site development for successful dental implantation. The curved syringe offers better access to the site. The 200-850 microns (um) particles are perfect for bone grafting, ridge augmentation, implants, and the MIT technique. 0.5cc per syringe / 2 syringes (1cc) per box.

REF

MIT-OS



GOLD KIT

This special set of tools were created by Dr. Samuel Lee to perform surgery on and to prepare the surgical site for successful ridge augmentation and restoration of gum recession. This special set comes with various tools that enable you to perform the minimally invasive tunneling techniques that have been further advanced by the doctor himself.

REF

MIT Gold Kit



SUTURES

CHROMIC CATGUT 4-0

REF

CC40

- 12 pcs in 1 box
- Absorbable, USP
- 3/8, 19mm Reverse Cutting, 45cm, 18"



CHROMIC CATGUT 5-0

REF

CC50

- 12 pcs in 1 box
- Absorbable, USP
- 3/8, 16mm Reverse Cutting, 45cm, 18"



CHROMIC CATGUT 6-0

REF

CC60

- 12 pcs in 1 box
- Absorbable, USP
- 3/8, 13mm Reverse Cutting, 45cm, 18"



PTFE 4-0

REF

PTFE40

- 12 pcs in 1 box
- PTFE White 45 4/0 n/19 3/8 RC





**Where Simplicity
Meets Innovation**